

Brody T. Bluemel, Ph.D.

Assistant Professor of English

Department of English and Foreign Languages

Education and Humanities, 220

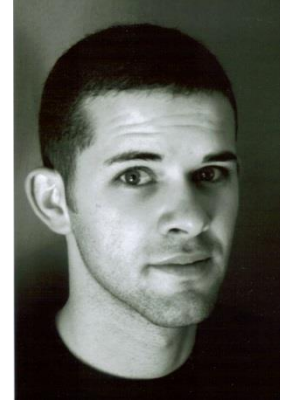
1200 N. DuPont Hwy

Dover DE 19901

302.857.6579 office

302.857.6563 fax

bbluemel@desu.edu



Education:

- Ph.D. Applied Linguistics & Asian Studies, 2015. The Pennsylvania State University
- M.A. German, 2010. Middlebury College
- M.A. Chinese Languages & Culture, 2009. Valparaiso University
- B.A. English & Language Acquisition, 2008. Drake University

Research Interests:

- Corpus Studies
- Parallel Corpora & Pedagogy
- Teaching in the Foreign Language Classroom
- Writing Language Acquisition & Instruction
- English as a Second Language
- Chinese as a Foreign Language
- Asian Studies and Asian Languages
- German as a Foreign Language

Publications:

- Bluemel, B. (2015). Learning in Parallel: Using parallel corpora to enhance written language acquisition at the Beginning Level. *Dimension*. Vol. 1, p. 31-48.
- Bluemel, B. (2013). Parallel Corpora in Pedagogy: Using Parallel Corpora in Teaching Chinese as a Foreign Language (CALPER Corpus Community Report, No. 5). The Pennsylvania State University: Center for Advanced Language Proficiency Education and Research.